

Stainless Logitilt - when lifting and tilting hygienically

Optimum hygiene - with the stainless-semi Logitilt the risk of bacterial contamination is minimised.

The stainless-semi products are developed for environments where severe hygiene is needed on the surfaces that are in direct contact with the goods being handled, e.g. meat, fish or medicine.

The design focuses on the safety and ergonomic working conditions of the user - the Logitilt can tilt boxes and crates up to 90°. The user does not have to bend down or stretch up to reach the components in the bottom of the crate or box - this applies to both standing and sitting work positions.

The ergonomically correct handle of the Logitilt ensures the user a relaxed hold.

High quality is ensured through an extended test programme and in cooperation with experts in Health and Safety.



Technical Specifications

The Logitilt can carry, lift and tilt crates and boxes up to 90°, and the working height can be varied.

The handle can be turned to the side and locked, so that the user has free access to the contents of the crate or box.

Easy to clean and optimum resistance

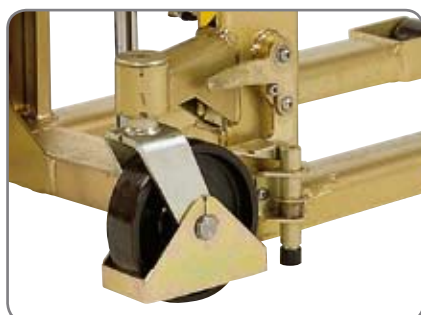
- acid-resistant and electric polished fork chassis
- strong surface
- corrosion resistant

Long operating life and low maintenance costs

- strong construction
- AISI316L steel used on the fork chassis



For the food industry in which hygiene and ergonomically correct working positions are important factors.



Foot protectors, parking brake, safety valve and emergency stop offer the operator optimum safety.



Remote control for the tilt function.

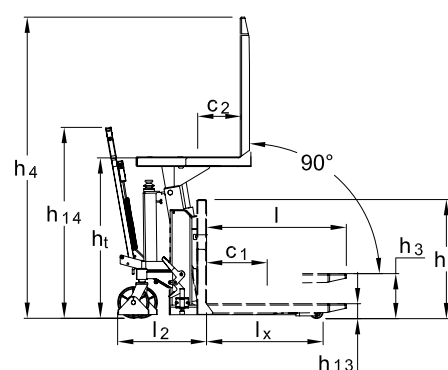
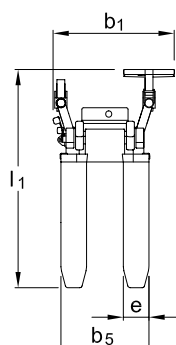


Closed forks mean easy cleaning and few hiding places for bacteria.



The handle can be turned to the side and locked, so that the user has free access to the contents of the crate or box.

Product (measured in mm)	LT 1000TE RF-SEMI
Capacity in kg	1000
Height, tilted h_t	750-950
Lifting height h_3	275
Fork length l	800
Overall height with handle h_{14}	1090
Overall height h_1	680
Overall width b_1	780
Fork span b_5	560
Fork width e	163
Overall length by 800 mm forks l_1	1410
Length without forks l_2	590
Run-in length l_x	665
Overall height h_4	$h_t + l$
Lowered height h_{13}	85
Load centre c_1	max. $l/2$
Load centre c_2	min. 200 - max. 420
Pump motor	0,8 KW 12V
Lifting speed lift/tilt	4 s/14 s
Lowering speed lift/tilt	3 s/11 s
Weight by 800 mm forks (without battery)	176 kg



Please ask for specification details or visit our website www.logitrans.com. We also offer tailor-made solutions.



Unit F1, Maynooth Business Campus
 Maynooth, Co Kildare, Ireland
 Tel: +(353) 1 6016106 • Fax: +(353) 1 6016109
 e-mail: info@liftrite.ie • web: www.liftrite.ie