

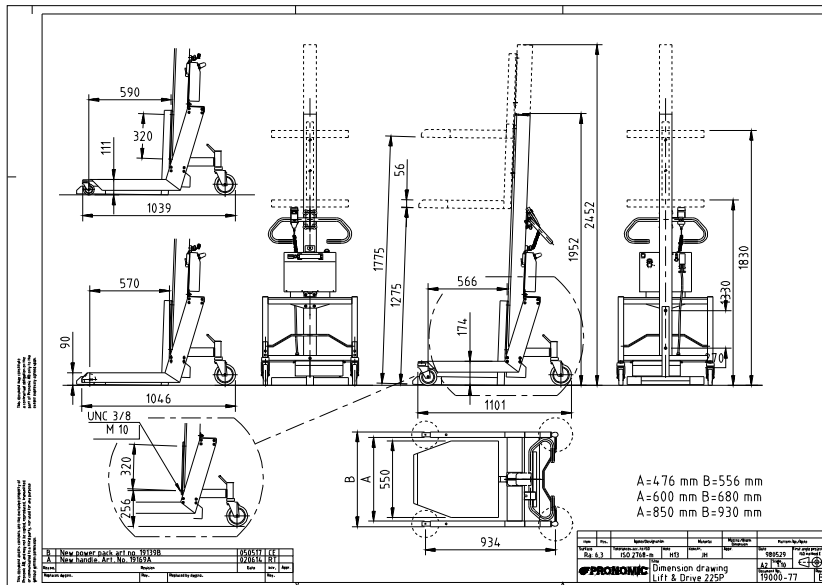
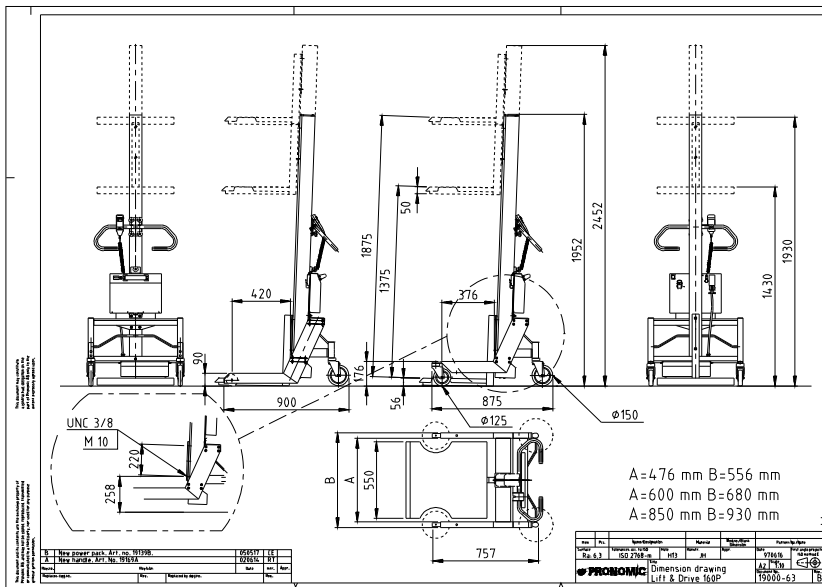
Lift & Drive 160P



Incorrect gripping and turning positions very often lead to strain and wear injuries, even if the items lifted by the person are light. Avoid and prevent this by using the Lift & Drive lifting trolley - the mobile lifting trolley for the 21 st century, with an electrically adjustable height of the load platform. Matched to the needs of personnel in institutional kitchens, industrial plants, warehouses, chemist's shops and so on. Give free rein to your imagination and put the versatility of the Lift & Drive to full use. The lifting trolley can lift and transport cartons, boxes, cans, bags, canteens, plastic baskets and so on.



Lift & Drive 160P



MODULE SYSTEM:

With our module system different models can easily be built using our standard modules, compact - wide - tall - low. The trolley is delivered assembled or in parts.

SIMPLE OPERATION

Due to large double wheels, one of them with a directional lock, and compact outside dimensions Lift & Drive is very easy to use in confined spaces and corridors. To enable the user to adopt an ergonomic working position, the height of the operating handle is adjustable. No risk of the trolley moving while lifting - an effective parking central brake will keep the trolley firmly in place. A remote control makes loading and unloading safe.

SIMPLE SERVICE

Due to exchangeable standard components the lift trolley provides best possible serviceability. The electronics and batteries are easily accessible. The freight costs are minimised while Lift & Drive is delivered in two parts, the chassis and the column. It is easily assembled.

SIMPLE AND SAFE TECHNOLOGY

A number of options, load platforms with built in scales, adjustable forks, makes the trolley very flexible. The electrical liftable load platform is powered by environment friendly lead batteries that you recharge during night.

To avoid injuries the load platform automatically brakes at 3 kilos of pressure. The overload protection brakes at maximum load.

Lift & Drive can not rust - it is made of aluminium and stainless steel.

Technical specifications Lift & Drive 160P

| | |
|--|-----------------|
| Total height | 1952, 2452 mm |
| Length(w. load platform) | 875(1190)mm |
| Width | 556, 680, 930mm |
| Load platform | 550x550mm |
| Lifting height | 1430, 1930mm |
| Lifting speed, no load | 120mm/sek |
| Lifting speed, max load | 70mm/sek |
| Front/rear wheel | 75-125/150mm |
| Max load | 160kg |
| Dead weight | 70-90kg |
| Battery voltage (valve regulated lead batt.) | 24V |
| Battery charger included | |

19000eng.pmd Rev 0603-1

Represented by:



Unit F1 • Maynooth Business Campus
Maynooth • Co Kildare • Ireland

Phone: 00353 1 601 61 06 • Fax: 00353 1 6016109

E-mail: info@liftrite.ie • Web: www.liftrite.ie