

More standard Lift-Trolleys and vacuum driven lifting devices for all kind of applications, loads and heights.



Lift & Drive 90P/125P



If you adopt unsuitable postures when you're grasping and turning things you're all too likely to suffer injuries from strain and wear, even if the items you're handling don't weigh much. Avoid this by using a Lift & Drive - the mobile lift trolley for the 21st century, with a load platform that can be electrically raised and lowered.

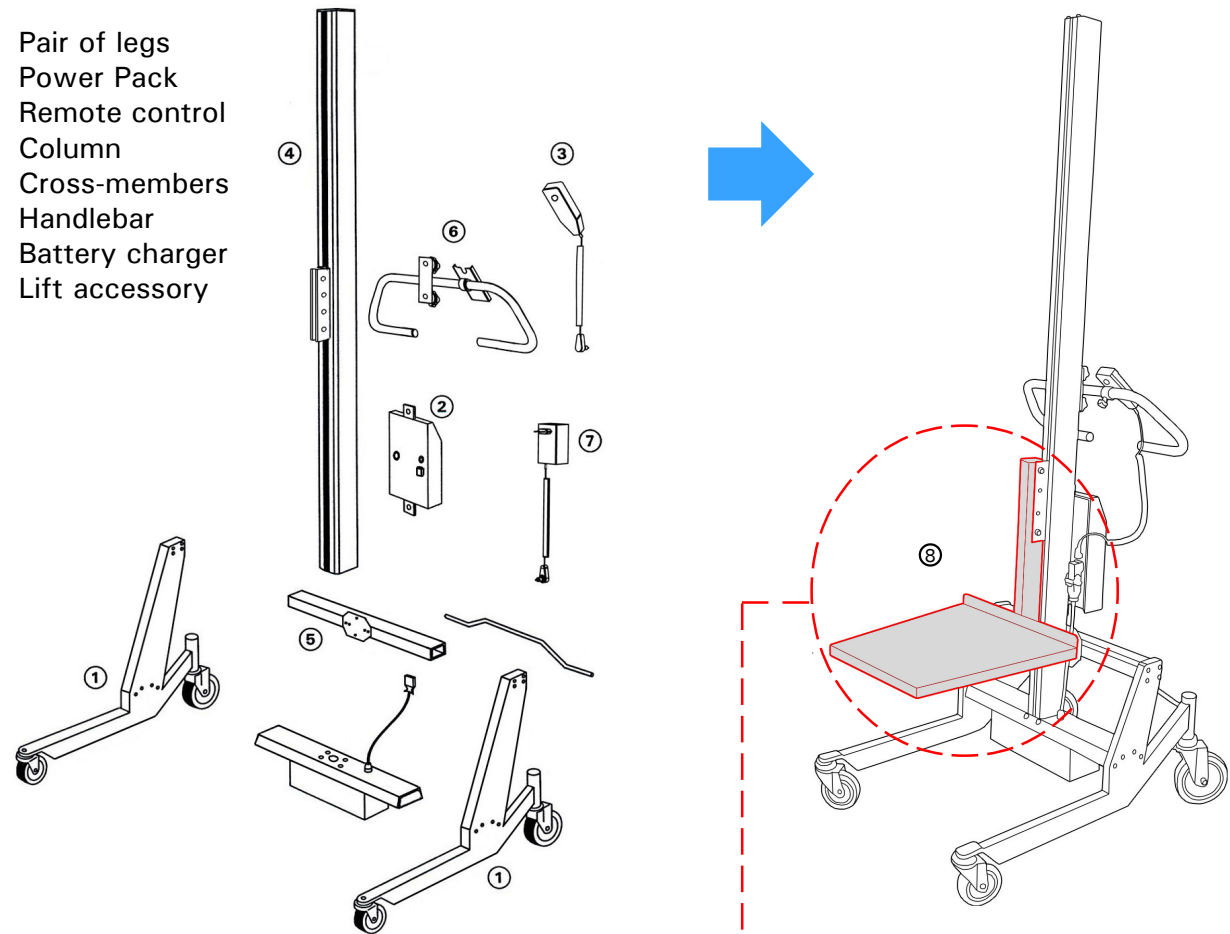
Matched to the needs of personnel in institutional kitchens, industrial plants, workshops, warehouses, dispensaries, post offices and so on. Give free rein to your imagination and put the versatility of the Lift & Drive trolley to full use - lifting and transporting cartons, boxes, drums, sacks, cooking utensils, plastic crates and a great deal else with ease and dispatch.



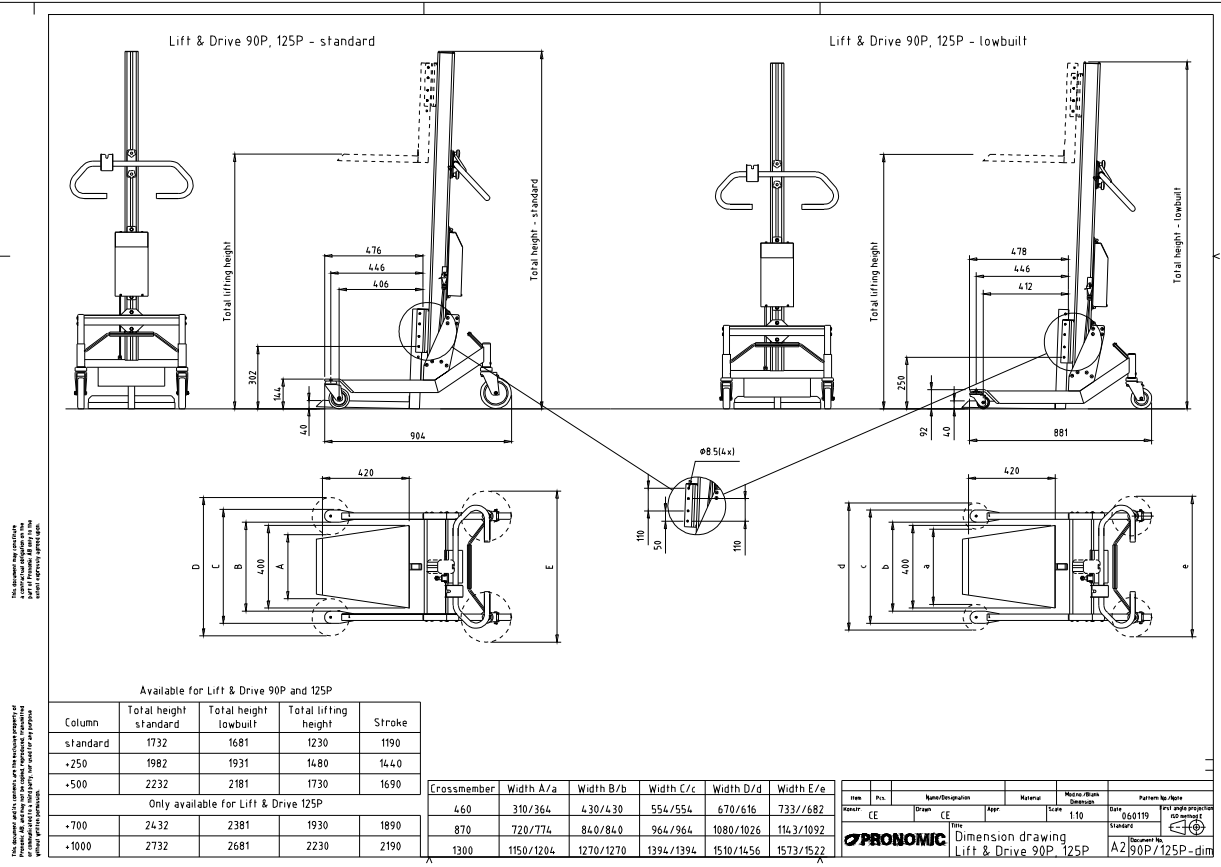
Unit F1 • Maynooth Business Campus
Maynooth • Co Kildare • Ireland
Phone: 00353 1 601 61 06 • Fax: 00353 1 6016109
E-mail: info@liftrite.ie • Web: www.liftrite.ie

Modular Construction

- 1 Pair of legs
- 2 Power Pack
- 3 Remote control
- 4 Column
- 5 Cross-members
- 6 Handlebar
- 7 Battery charger
- 8 Lift accessory

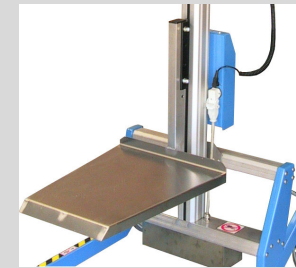


Lift & Drive 90P & 125P standard, 90P & 125P lowbuilt



You can choose a lift accessory from a wide range of standard accessories. We also develop and manufacture custom made accessories.

Standard lifting solutions



Standard load platform



Load platform & fork



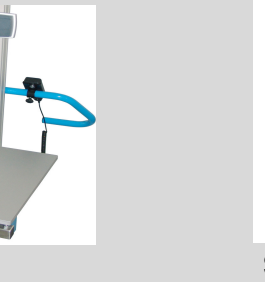
Expand -o-Turn



Prong



Scale



Squeeze-o-Turn

Custom made lifting solutions



Fork with adjustable width



Special load platform

For more standard lifting solutions and lift-trolleys please look at the back of this page.

Technical specifications

Total height, standard	1732, 1982, 2232, 2432*, 2732* mm
Total height, lowbuilt	1681, 1931, 2181, 2381*, 2681* mm
Min lifting height	40 mm
Max lifting height	1230, 1480, 1730, 1930*, 2230* mm
Stroke	1192, 1442, 1692, 1892*, 2192* mm
Length (without load platform), standard	904 mm
Length (without load platform), lowbuilt	881 mm
Width, standard	733 mm till 1573 mm
Width, lowbuilt	682 mm till 1522 mm
Load platform (LxB)	420x400 mm
Wheel diameter, standard (front/rear)	100/150 mm
Wheel diameter, lowbuilt (front/rear)	60/100 mm
Max load, 90P, 125P	90 kg, 125 kg
Weight of unit	38 kg
Battery voltage / capacity	18 V / 6,5 Ah, 13 Ah
Charging voltage	230V AC 50 Hz or 115V AC 60 Hz
Lifting speed for 90P with maximum load	5.4 m/min up / 7.6 m/min down
Lifting speed for 125P with maximum load	4.75 m/min up / 7.25 m/min down
Underlined figures apply to the standard trolley	
* = These dimensions are not available for 90P	

